

By: Ian Craig, Interim Managing Director, Children, Families & Education  
To: Mark Dance, Cabinet Member for Operation, Resources and Skills, CFE  
Subject: **Round Three Children's Centres**  
Classification: Unrestricted

---

Summary: **To approve the proposed locations for ten Round Three Children's Centres (Tranche One) and receive information regarding the outstanding proposals (Tranche Two and Three)**

---

## Background

1 (1) Following the targets of 20 children's centres in Round One and 52 centres in Round Two, KCC has a target to deliver 30 new centres in Round Three (April 2008-March 2010), bringing the total number of centres in Kent to 102. All children living in Kent will then have access to a children's centre.

(2) An agreed process for identifying the final 30 centres has been developed and implemented (Appendix 1), mapping gaps across the county where communities do not have access to Children's Centres developed in Round One or Two (Appendix 2).

(3) Extensive work has taken place involving the central Children's Centre Team and the Children's Centre Capital Projects Team, working with Local Children's Services Partnerships (LCSP), KCC Area Planning and Development Officers and Estates to identify feasible location/models for centres within these areas.

(4) In line with Department for Children, Schools and Families guidance, the portfolio of Round Three centres will be comprised of a mixture of models, including new builds, refurbishments and centres based on existing services and provision, such as health clinics or libraries. Each centre will serve between 800 to 1200 children, although the reach for centres in rural areas may be below 800.

(5) A 'sign-off' matrix (Appendix 3) has been developed to ensure stakeholders/KCC officers confirm their approval of the location/model. The distribution list for this matrix is as follows:

- Relevant Local Children's Services Partnerships Manager (representing all local stakeholders and KCC Officers including External Services Managers and Childcare Development Officers);
- Relevant Area Children's Services Officer;
- Principle Advisor for Early Years and Childcare;
- Relevant Children, Family and Education Area Planning and Development Officer;
- County Council Client Project Manager (Property Group);

Additionally, the local KCC Member is asked to approve relevant proposals.

(6) Proposals that receive stakeholder approval go forward to Children, Families and Education Senior Management Team for agreement, followed by Cabinet level sign off.

(7) When full approval is in place, the centre location will be released to the press.

### Tranche One

2 (1) The following 10 locations have received stakeholder sign-off and CFE SMT approval.

	<b>Location</b>	<b>LCSP</b>	<b>Site/Model</b>	<b>Local members</b>
1	Painters Ash	Gravesham	Site:Painters Ash Primary School Model: Modular New Build	Cllr Ray Parker Cllr Mike Snelling
2	Meopham	Gravesham	Campus/cluster model: building on existing provision, with delivery from a range of sites	Cllr Mike Snelling
3	Westborough	Maidstone 1	Site: Westborough Primary School Model: Modular New Build	Cllr Dan Daley Cllr Jeffrey Curwood Cllr Paulina Stockell
4	Eastborough	Maidstone 2	Site: Eastborough Primary School Model: Modular New Build	Cllr Ian Chittenden Cllr Paul Carter
5	Headcorn	Maidstone 2	Site: Headcorn Primary School Model: Modular New Build	Cllr Paulina Stockell
6	Kings Hill	Malling	Site: The Discovery School Model: Modular New Build	Cllr Richard Long
7	Westerham	Sevenoaks	Site: Churchill CEP School Model: Modular New Build	Cllr Richard Parry Cllr Peter Lake
8	Dunton Green	Sevenoaks	Site: Dunton Green Primary School Model: Modular New Build	Cllr John London Cllr Richard Parry Cllr Nick Chard
9	Pembury	Tunbridge Wells	Site: Pembury Primary School Model: Modular New Build	Cllr Kevin Lynes Cllr Alex King Cllr James Scholes
10	West Kingsdown	Swanley	Site: West Kingsdown CEP School Model: Modular New Build	Cllr Roger Gough Cllr David Brazier

(2) Round Three centres will serve areas of greater affluence than the previous project phases and will offer a less intensive level of service. The design of the Round Three centres will reflect this.

(3) To enable feasibility studies to take place, a minimum accommodation brief has been developed, consisting of one large meeting room, a small office/reception and toilet facilities.

### **The Remaining 20 centres**

3 Potential locations and models have been determined for 16 of the 20 remaining sites. These proposals are at different stages of activity to establish their feasibility. Identification of locations and models for the final four is still in process. It is anticipated that the next ten sites will be brought forward by February/March and the final ten by March/April.

### **Recommendation**

4 The Cabinet Member for Operations, Resources and Skills, is requested to agree to the locations identified in this report for Tranche One of Round 3 and receive information regarding the remaining Round 3 sites.

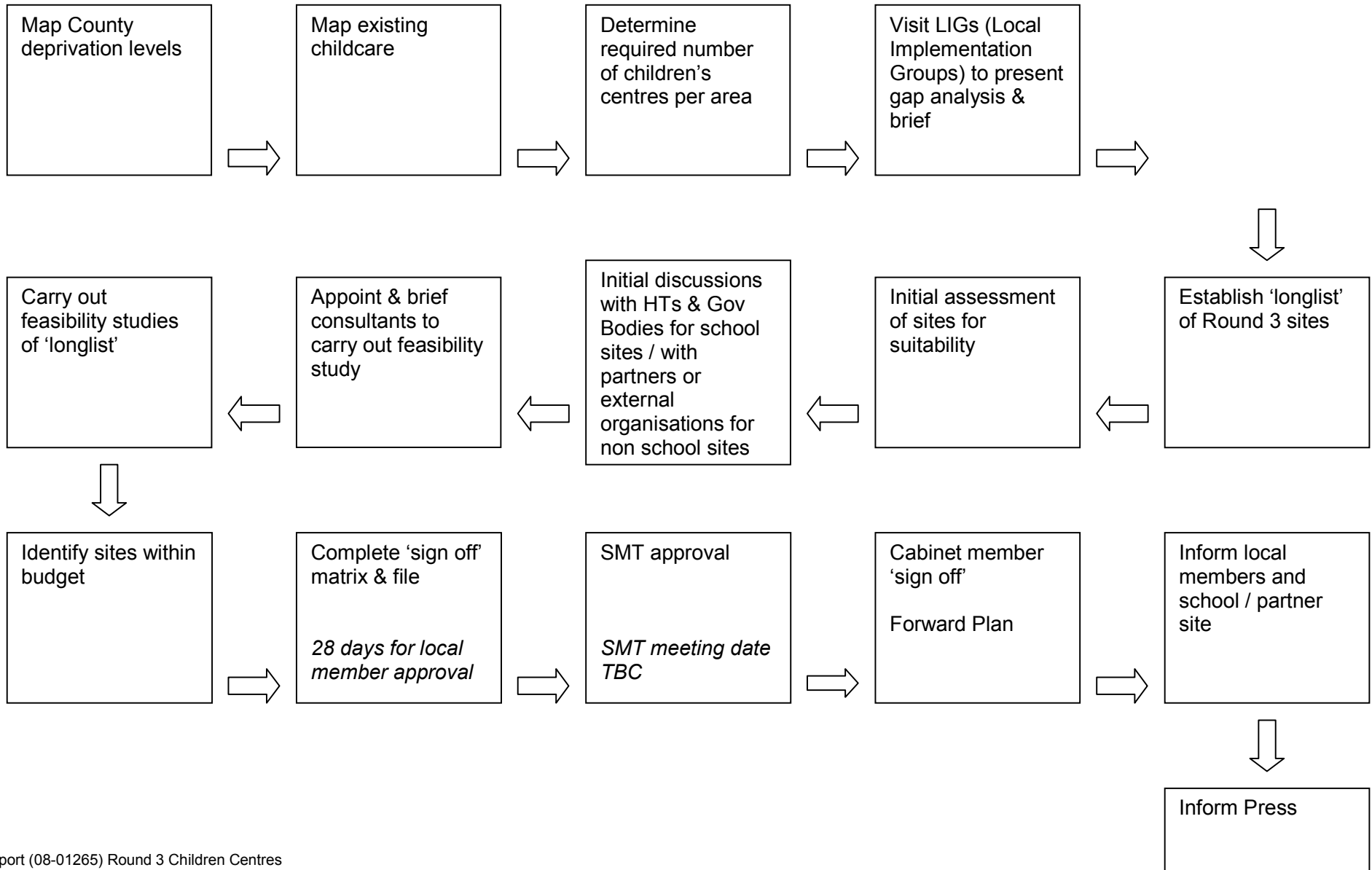
Alex Gamby  
Head of Early Years and Childcare (Operations)  
01622 761050  
Alex.gamby@kent.gov.uk

---

Background Documents

None

## Appendix 1 Process for identification of children's centre sites Round 3



## **Appendix 2 Round 3 Gap Analysis**

Area	Number of Round 3 centres anticipated
Ashford 1	2
Ashford Rural	1
Canterbury City & Country	2
Cranbrook & Paddock Wood	1
Dartford East	1
Deal & Sandwich	1
Gravesham	3
Maidstone 1	3
Maidstone 2	4
Malling	4
Sevenoaks	4
Swanley	1
Tonbridge	1
Tunbridge Wells	2
TOTAL	30

### Appendix 3: Stakeholder 'sign – off' matrix

Stakeholder Partner	Please put yes in relevant box		Comments.
Local Partnership Manager	Approve	Not approve	
Area Planning and Development Manager	Approve	Not Approve	
Jennie Landsberg Principal Adviser, Early Years And Childcare	Approve	Not approve	
<b>Rebecca Frier</b> (Asset Management Officer - Estates Team) / <b>David Jenkins</b> (Project Support Officer)	Approve	Not approve	
Area Children's Services Officer	Approve	Not approve	
Client Project Manager (property Group)	Approve	Not approve	